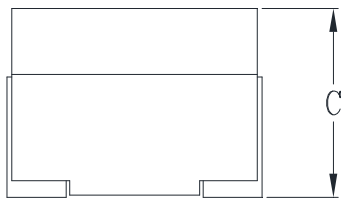
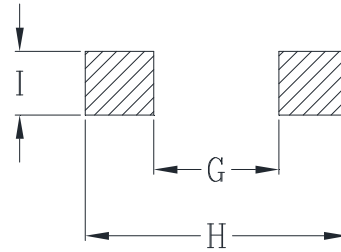
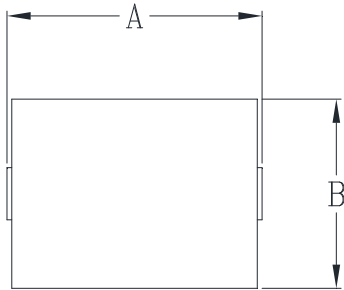


# CYNTEC CO., LTD.

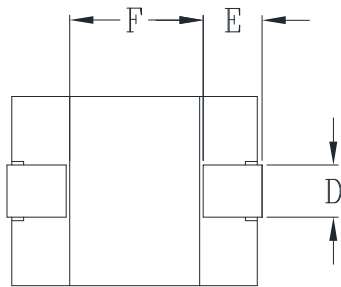
## 乾坤科技股份有限公司

### HCB118080S Series

#### Mechanical dimensions



Suggested PWB Layout



UNIT : mm  
 A = 10.8 MAX  
 B = 8.0 MAX  
 C = 8.0 MAX  
 D = 2.2  
 E = 2.5  
 F = 5.6  
 G = 5.1  
 H = 11.1  
 I = 2.7

#### Electrical Characteristics @ 25°C, 100kHz, 1V

Delta P/N	L <sup>1</sup> (nH)	Li (nH) MIN	DCR (mΩ)	Isat <sup>2</sup> (A)			Ir <sup>3</sup> (A)
				25°C	100°C	125°C	
HCB118080S-101	100	72	0.17 ± 5%	132	105	99	79
HCB118080S-121	120	87		110	88	83	
HCB118080S-151	150	108		90	72	68	
HCB118080S-181	180	130		72	58	54	
HCB118080S-221	220	158		57	46	43	

\*C=8.1mm MAX for 100nH part.

1. Tolerance of inductance : ± 10%
2. Isat is the DC current which causes the inductance drop to Li.
3. Ir is the DC current which causes the surface temperature of the part increase approximately 40 °C.
4. Operating temperature: -40°C to 125°C (Self-temperature rise included).